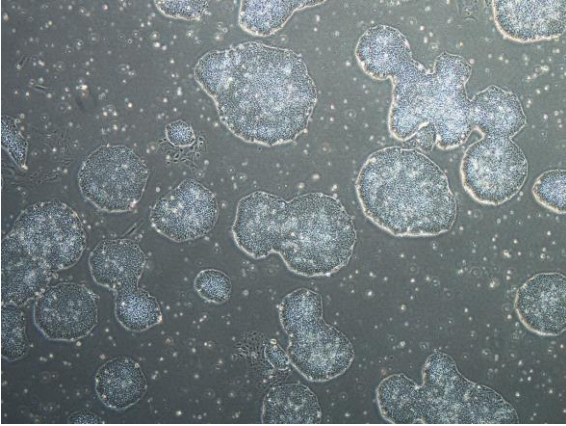
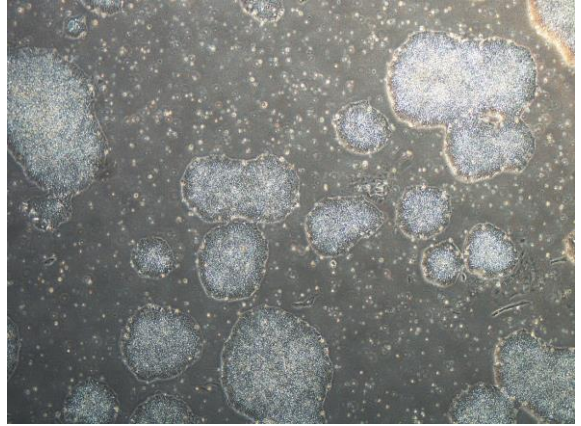


【 CiRA-j-1166 】 Morphology of iPSC colonies

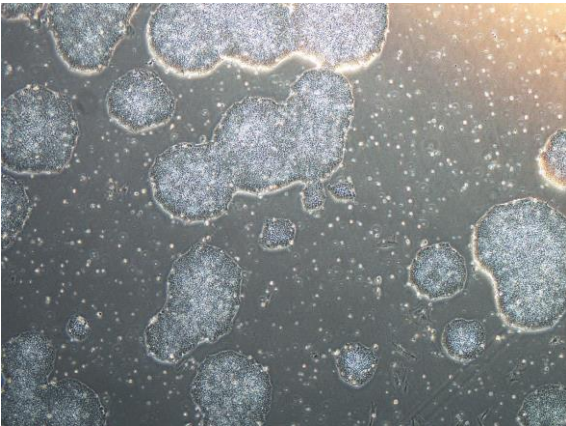
CiRA-j-1166-A: passage-2



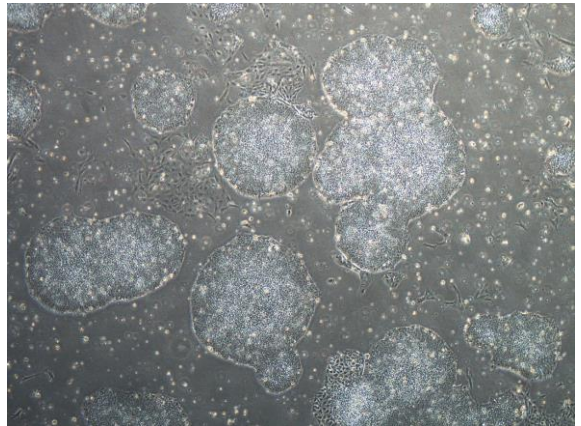
CiRA-j-1166-B: passage-2



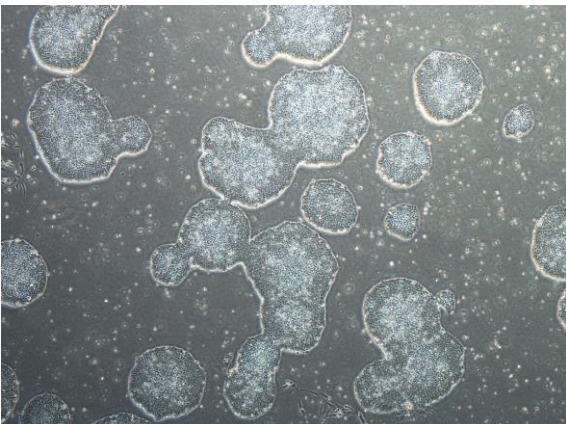
CiRA-j-1166-C: passage-2



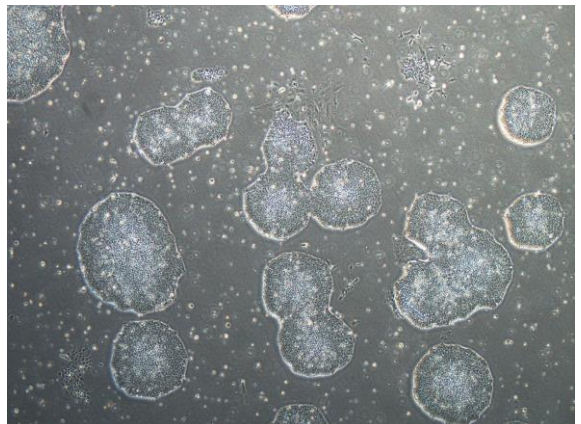
CiRA-j-1166-D: passage-2



CiRA-j-1166-E: passage-2



CiRA-j-1166-F: passage-2



(All images were captured at 4x magnification)